

JOB NAME _____ LOCATION _____
 PURCHASER _____ ORDER NO. _____
 ENGINEER _____
 SUBMITTED TO _____ FOR: Reference Approval Construction
 SUBMITTED BY _____ DATE _____

UNIT DESIGNATION: Schedule No. _____ MODEL NO. _____

PRODUCT DATA

COOLING PERFORMANCE

TOTAL CAPACITY MBH
 SENSIBLE CAPACITY MBH
 EVAPORATOR PRESSURE
 AT SATURATION PSIG
 EVAPORATOR TEMPERATURE
 AT SATURATION °F
 TOTAL SUPPLY AIR CFM
 TEMP. OF AIR ENTERING
 EVAPORATOR COIL °F DB/WB

HEATING PERFORMANCE

Refer to field-installed accessories on reverse side.

SUPPLY AIR BLOWER PERFORMANCE

TOTAL SUPPLY AIR CFM
 TOTAL RESISTANCE EXTERNAL
 TO UNIT IWG
 BLOWER SPEED RPM
 POWER OUTPUT REQUIREMENT BHP
 MOTOR RATING HP
 POWER INPUT REQUIREMENT KW

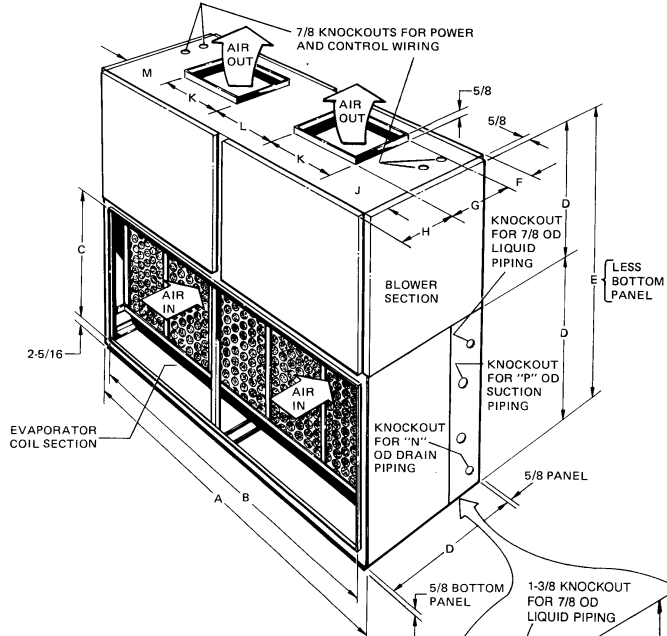
ELECTRICAL DATA

POWER SUPPLY
 TOTAL UNIT AMPACITY AMPS
 MINIMUM WIRE SIZE AWG
 (Copper Conductors)
 MAXIMUM FUSE SIZE
 DUAL ELEMENT AMPS

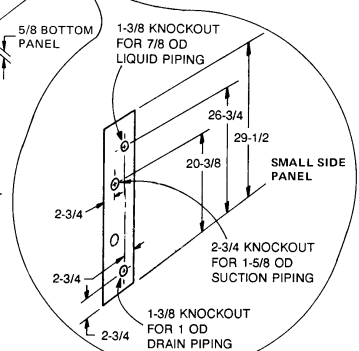
UNIT WEIGHT

TOTAL OPERATING WEIGHT LBS.
 (Including field-installed accessories)

DIMENSIONS - INCHES



PIPING CONNECTIONS CAN BE MADE EITHER ON THE LEFT HAND OR RIGHT HAND SIDE OF THE UNIT

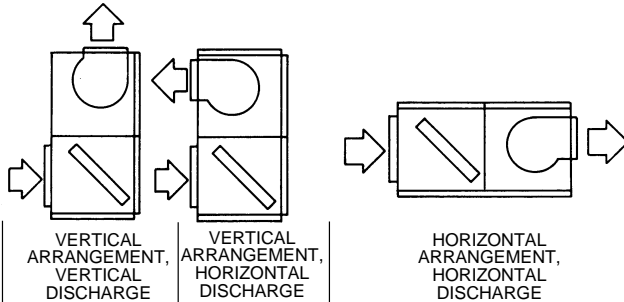


MATCHING CONDENSING UNIT DATA:
 Model No.
 Submittal Form No.

DIMENSIONS - Inches

A	B	C	D	E	F	G	H	J	K	L	M	N	P
89-1/2	85	26-1/8	29-1/2	59	2-7/16	15-7/8	12-7/16	20-3/4	16	16	20-3/4	1	1-5/8

TYPICAL INSTALLATION APPLICATIONS



ACCESSORIES

- Heating Coil - Add 6" to unit height when used.
- Plenum - Add 24-5/8" to unit height when used.
- Base - Add 23-3/8" to unit height when used.

MIN. CLEARANCES

- 24" on one side for piping connection and access to blower motor.
- 1" on opposite side.
- 1" on rear.

Subject to change without notice. Printed in the U. S. A.

SPLIT-SYSTEM EVAPORATOR BLOWER
20 TON
MODEL L_BC240

FORM 550.23-SD4L (893)

Supersedes: Nothing

LUXAIRE
 Heating ■ Air Conditioning

FEATURES

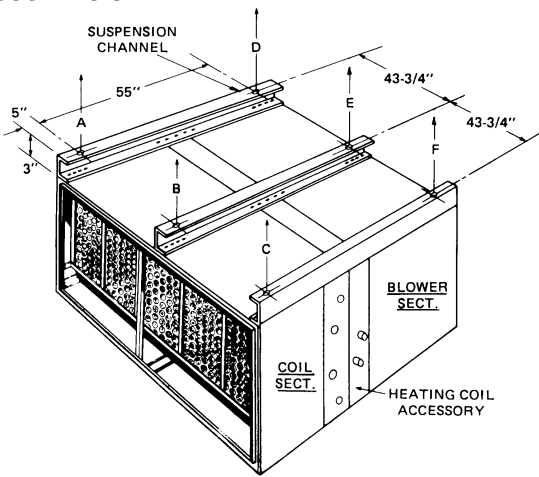
- Copper Tube / Aluminum Fin Coil
- Insulated Casing
- Fan Motor Contactor
- Single Source Power Connection
- Factory-Supplied Thermal Expansion Valves
- Throwaway Filters
- Design permits vertical or horizontal installation without modifying coil, piping or drain pan

FIELD-INSTALLED ACCESSORIES

- SUPPLY AIR PLENUM (1SP0405)
- RETURN AIR GRILLE (1RG0405)
- BASE (1BS0405)
- SUSPENSION KIT (1HH0451)
- INHERENTLY PROTECTED MOTOR (MODEL _____)
- STEAM COIL (1NF0453)
- Steam Pressure _____ PSIG
- Capacity _____ MBH
- Steam Rate _____ LBS/HR
- Entering Air Temperature _____ °F
- HOT WATER COIL (1HW0405)
- Capacity _____ MBH
- Entering Water Temperature _____ °F
- Water Flow Rate _____ GPM
- Entering Air Temperature _____ °F
- Water Pressure Drop _____ PSI

ACCESSORY DIMENSIONS - INCHES

SUSPENSION KIT

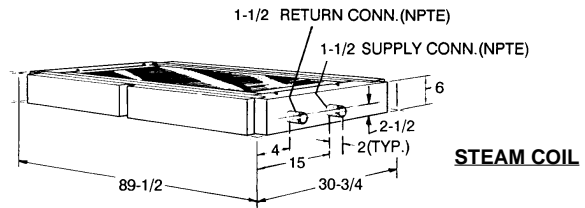


SUSPENSION WEIGHTS, LBS.

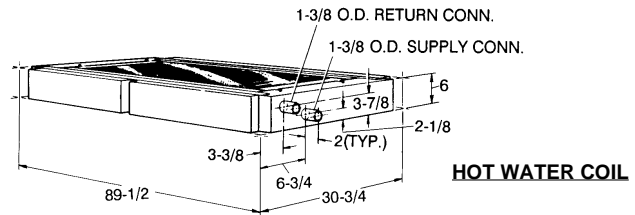
A	B	C	D	E	F

STEAM AND HOT WATER COILS

NOTE: Heating coils can be field-installed between evaporator coil section and blower section. They can be positioned for connections at either end of

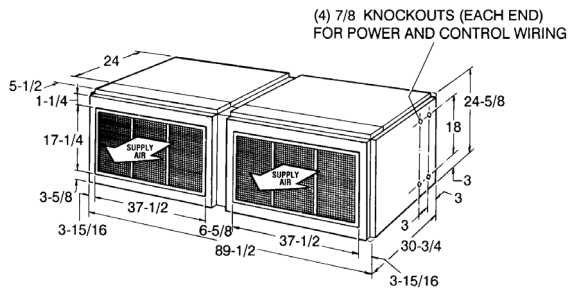


STEAM COIL

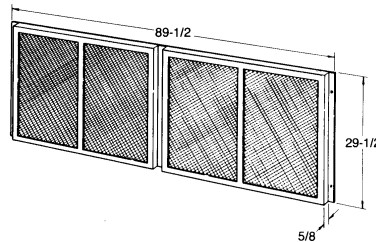


HOT WATER COIL

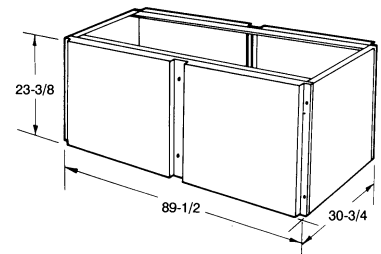
SUPPLY AIR PLENUM



RETURN AIR GRILLE



BASE



Copyright © 1993 by Central Environmental Systems - ALL RIGHTS RESERVED

NOTES:
