

INSTALLATION INSTRUCTION

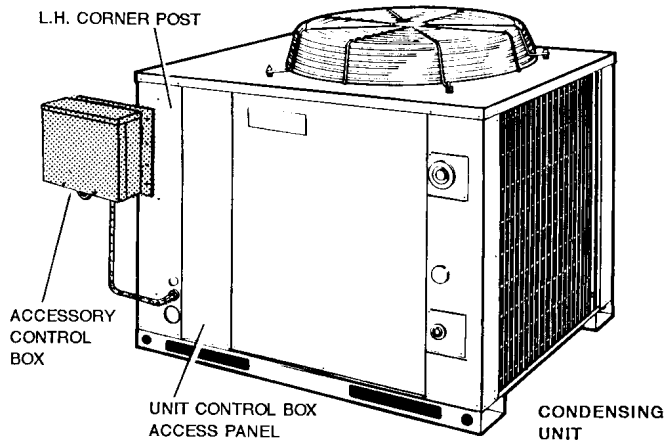
0°F LOW AMBIENT ACCESSORY MODELS 2LA04702025, 2LA04702146 & 2LA04701958 FOR 208/230, 460 & 575 VOLT APPLICATIONS

Supersedes: 550.23-N1.1V (490)

550.23-N1.1V (495)

035-13052

FOR 7.5, 10 & 12.5 TON SPLIT-SYSTEM CONDENSING UNITS MODELS HCE090, 120 & 150 / HHB090, 120 & 150



GENERAL

Standard split-system condensing units are designed to operate at ambient temperatures down to 45° F. To operate safely at ambient temperatures down to 0°F, a low ambient accessory will be required.

This instruction provides all the necessary information to properly field-install a low ambient accessory on the condensing units listed above. Components that are supplied in the respective accessory are listed in Table 2. The accessory mounting plate, some electrical components and some hardware are to be field supplied as indicated in this instruction.

Refer to Table 1 for application data and the recommended auto-transformer connections.

WIRE IN ACCORDANCE WITH ALL LOCAL AND N.E.C. CLASS 1 WIRING REQUIREMENTS.

TABLE 1 - APPLICATION DATA

ACCESSORY MODEL NO.	UNIT SIZE (TONS)	LINE VOLTAGE (-3-60HZ)	AUTO-TRANS LEAD	
			VOLTS	COLOR
2LA04702025	7-1/2	208/230	91	RED
	10, 12-1/2	208/230	158	TAN
2LA047022146	7-1/2	460	188	RED
	10, 12-1/2	460	316	TAN
2LA04701958	10, 12-1/2	575	316	TAN
	7-1/2	575	212	RED

INSTALLATION

Install the low ambient accessories as follows:

1. Disconnect all electrical power to the unit.
2. Remove the unit control box access panel.
3. Field-fabricate a 16 gauge (8" X 8") galvanized steel plate for mounting the accessory electrical box. Refer to Figure 1 for the required hole sizes, hole locations and location of the plate for mounting to the unit.

TABLE 2 - PARTS SUPPLIED WITH ACCESSORY

ITEM	QTY.	PART NO.	DESCRIPTION
1	1	025-27756-001	Electrical Box - 8" x 8" x 4"
2*	1	025-22202-000	Terminal Block
3*	1	025-27760-001	Temperature Control
4	1	025-23120-000	Insulator Block
5*	1	025-27752-000 025-27753-000 025-27754-000	Control Transformer
6	1	035-08755-000 035-08756-000 035-08739-000 035-08740-000	Wiring Label
7	1	035-13052-000	Accessory Instruction - Form 550-23-N1.1V

*These items are factory assembled inside of the electrical box. All other items are shipped loose inside of the electrical box.

4. Using the mounting plate as a template, mark and drill four 3/16" holes. Fasten the mounting plate to the unit with for #8 x 1/2" sheet metal screws (field supplied).

CAUTION: Exercise care when drilling holes into the unit so that nothing is punctured or damaged on the inside.

5. Remove the cover from the 8" x 8" x 4" electrical box (provided) and secure the box to the mounting plate using four 1/4" bolts, nuts, washers, and lockwashers (field supplied) or other suitable hardware.
6. Remove the 1/2" and 3/4" knockout from the bottom of the accessory electrical box and the 7/8" knockout from the unit (location shown in Figure 1).
7. Field supply three wires and conduit (with water tight fittings) between the accessory electrical box and the unit control box. Minimum wire size to be 14 AWG. Refer to Figure 2 for typical low ambient accessory wiring.

NOTE: Allow sufficient length to form a drip loop at the unit entry to divert rain water away from the unit.

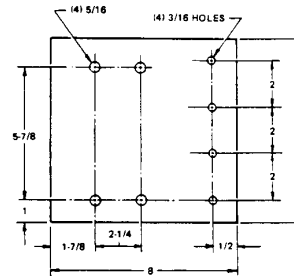
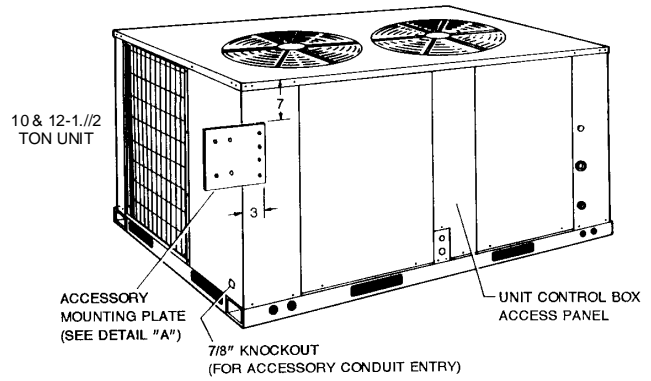
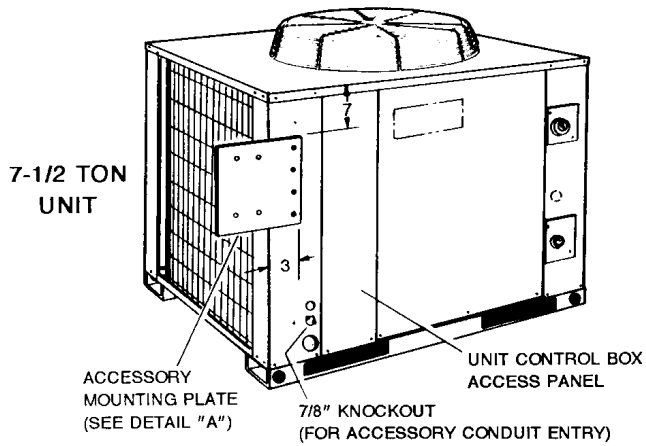
8. Connect the recommended auto transformer lead for the respective accessory as shown in Table 1.

CAUTION: Make sure all other leads from the auto transformer are adequately taped and make no electrical contact.

9. Remove the existing wire connecting the fan motor run capacitor (RC) and the load side of the contactor (M) on all voltages except for 575V on 10 ton - remove existing wire connecting (1RC) and (2RC). Refer to Figure 2.
10. Connect the three wires indicated in Step 7 to the proper terminations between the accessory control box and the unit control box. Refer to Figure 2 of the respective wiring label furnished with the accessory.

CAUTION: Adjust all wires for proper slack and tighten the screws on all connector clamps to secure in position. All wires should be cabled and secured with cable straps.

12. Attach the respective accessory wiring label to the inside of the unit control box access panel. Do not cover any existing labels. (Discard unused labels.)
13. Replace the accessory control box cover and the unit control box access panel.
14. Reconnect power to the unit.



DETAIL "A"
(FIELD-FABRICATED MOUNTING PLATE)
(16 gage galvanized steel)

FIGURE 1 - ACCESSORY MOUNTING PLATE LOCATION

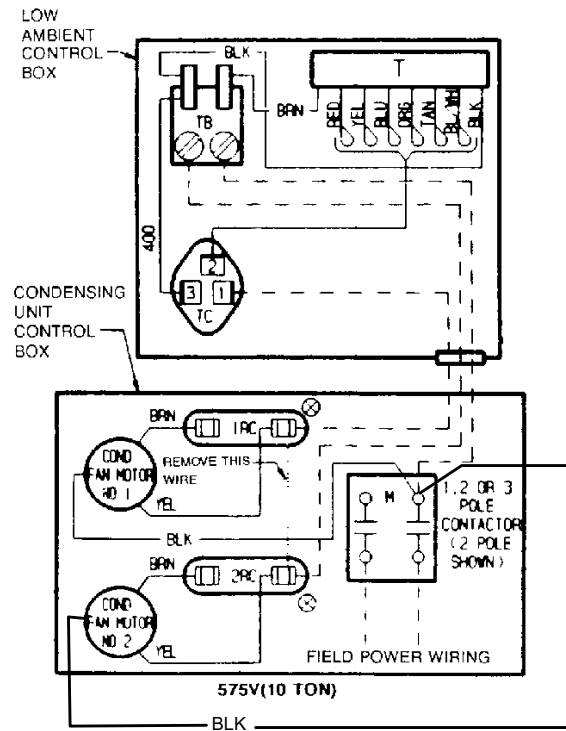
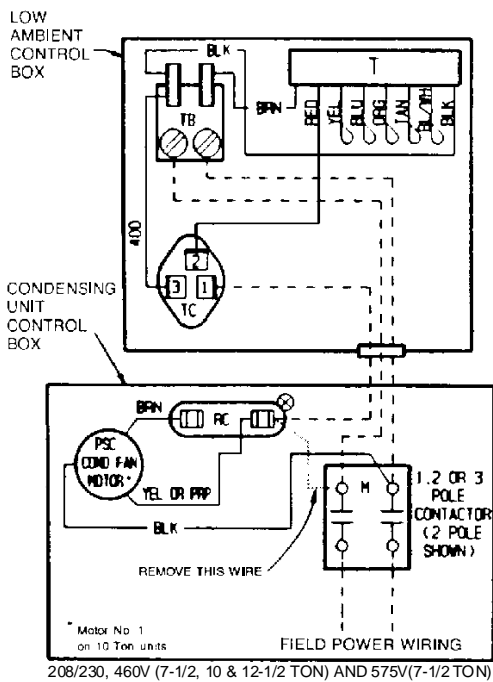


FIGURE 2 - TYPICAL ACCESSORY WIRING