

JOB NAME \_\_\_\_\_ LOCATION \_\_\_\_\_  
 PURCHASER \_\_\_\_\_ ORDER NO. \_\_\_\_\_  
 ENGINEER \_\_\_\_\_  
 SUBMITTED TO \_\_\_\_\_ FOR:  Reference  Approval  Construction  
 SUBMITTED BY \_\_\_\_\_ DATE \_\_\_\_\_

NIT DESIGNATION: Schedule No. \_\_\_\_\_

**PRODUCT DATA**

**COOLING PERFORMANCE**

TOTAL CAPACITY	_____ MBH
SENSIBLE CAPACITY	_____ MBH
EVAPORATOR PRESSURE AT SATURATION	_____ PSIG
EVAPORATOR TEMPERATURE AT SATURATION	_____ °F
TOTAL SUPPLY AIR	_____ CFM
TEMP. OF AIR ENTERING	_____ °F
EVAPORATOR COIL	_____ / _____ °F DB/WB

**HEATING PERFORMANCE**

Refer to field-installed accessories on reverse side.

**SUPPLY AIR BLOWER PERFORMANCE**

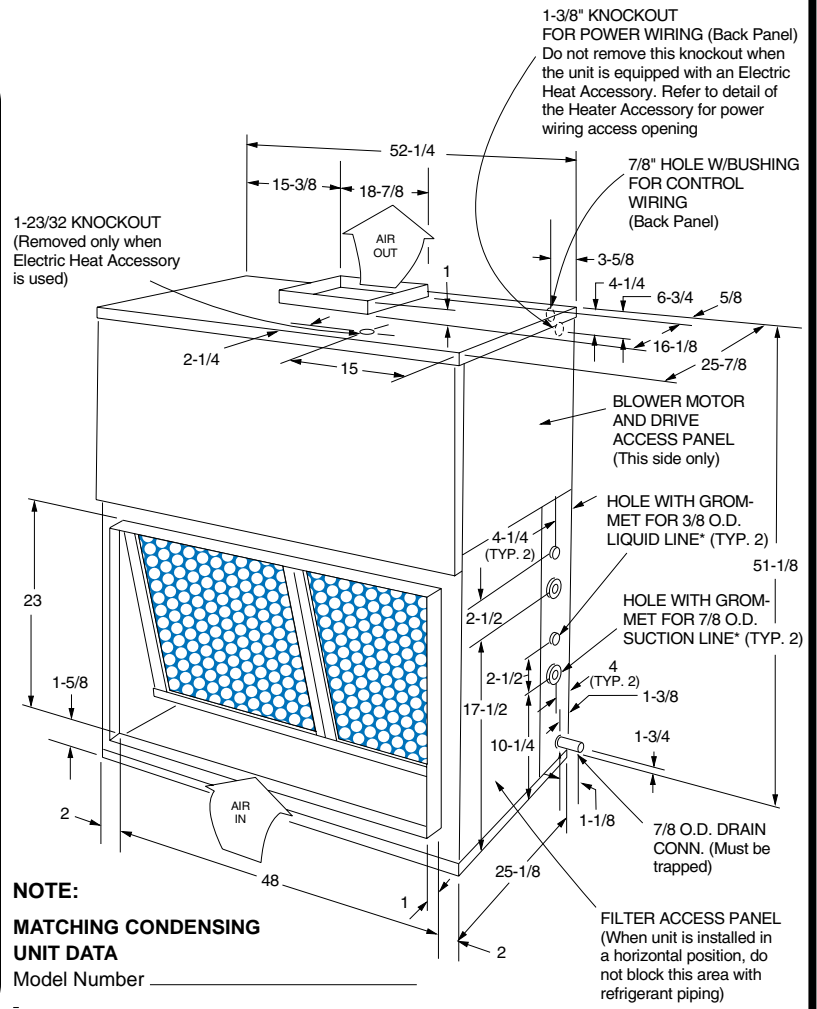
TOTAL SUPPLY AIR	_____ CFM
TOTAL RESISTANCE EXTERNAL TO UNIT	_____ IWG
BLOWER SPEED	_____ RPM
POWER OUTPUT REQUIREMENT	_____ BHP
MOTOR RATING	_____ HP
POWER INPUT REQUIREMENT	_____ KW

**ELECTRICAL DATA**

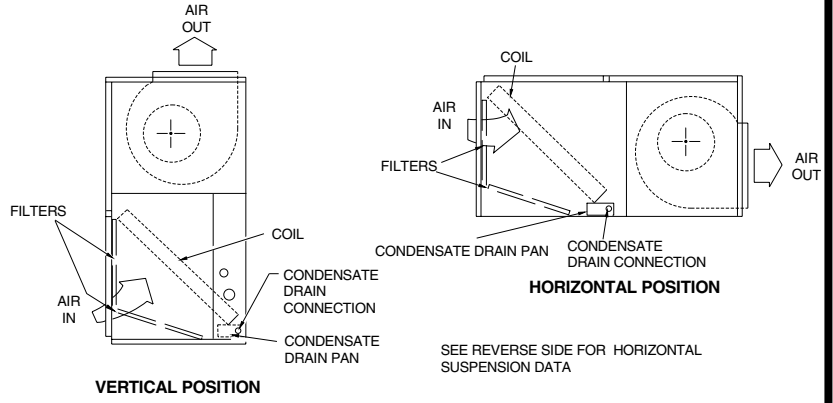
**MINIMUM CLEARANCES**

- Side with RETURN AIR opening ..... 24"
- Side with SUPPLY AIR opening ..... 24" ①
- Side with PIPING CONNECTIONS ..... 52" ②
- Side opposite PIPING CONNECTIONS. .... 12"
- Side with access for both POWER & CONTROL WIRING ..... ③
- Bottom ..... ④

- ① Overall height of the unit will vary if an electric heater, a supply air plenum or a base is used.
- ② This dimension is required for removal of the coil. Only 26" is required for normal servicing.
- ③ Although no clearance is required for service and operation, some clearance may be required for routing the power and control wiring.
- ④ Allow enough clearance to trap the condensate drain line.



**NOTE:**  
**MATCHING CONDENSING UNIT DATA**  
 Model Number \_\_\_\_\_



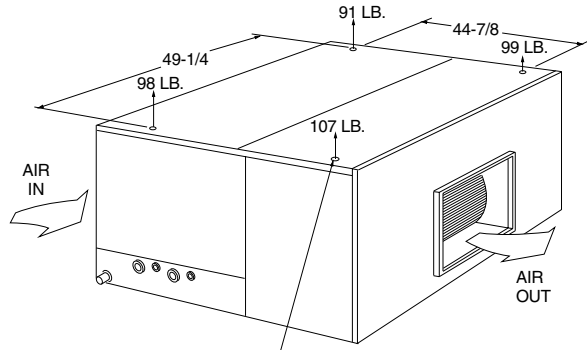
**SPLIT-SYSTEM EVAPORATOR BLOWER**  
**10 TON**  
**MODEL K\_BS120**

FORM 550.13-SD11L (399)

Supersedes: 550.13-SD11L (1287)



## SUSPENSION MOUNTING (Horizontal Application)



Four 3/8" - 16 weld nuts are provided in the unit support angles for ceiling suspension. Knockouts are provided in panels for access to these weld nuts. Support rods must be supplied in the field.

### ELECTRIC HEATER\*

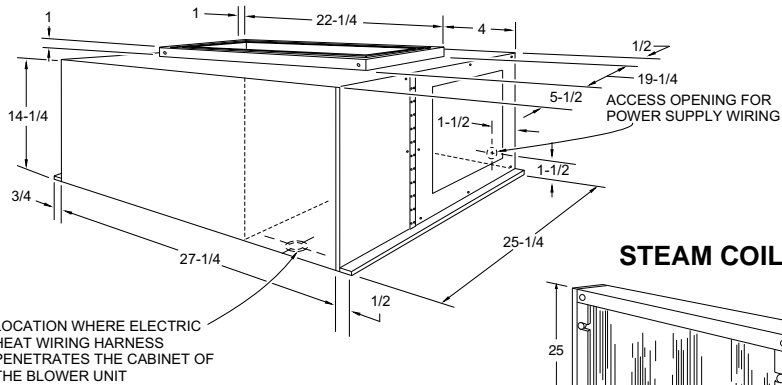
Model Number \_\_\_\_\_  
 Capacity (@ \_\_\_\_\_ Volts) \_\_\_\_\_ MBH  
 Power Input Requirement \_\_\_\_\_ KW  
 (Less Blower Motor)  
 STEAM COIL (1NF0451)  
 Steam Pressure \_\_\_\_\_ PSIG  
 Capacity \_\_\_\_\_ MBH  
 Steam Rate \_\_\_\_\_ LBS/HR  
 Entering Air Temperature \_\_\_\_\_ °F

### FIELD-INSTALLED ACCESSORIES

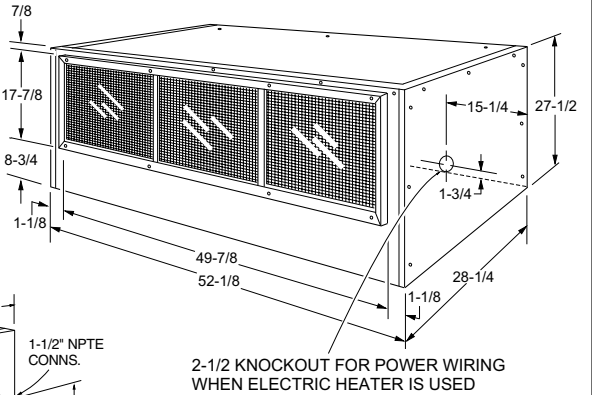
- SUPPLY AIR PLENUM (1SP0451)   
 RETURN AIR GRILLE (1RG0451)

## ACCESSORY DIMENSIONS - INCHES

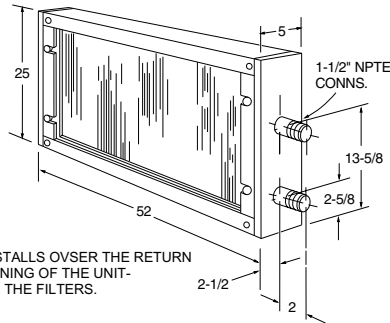
### ELECTRIC HEATER



### SUPPLY AIR PLENUM

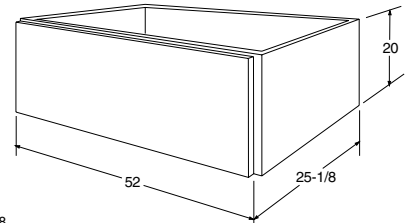


### STEAM COIL

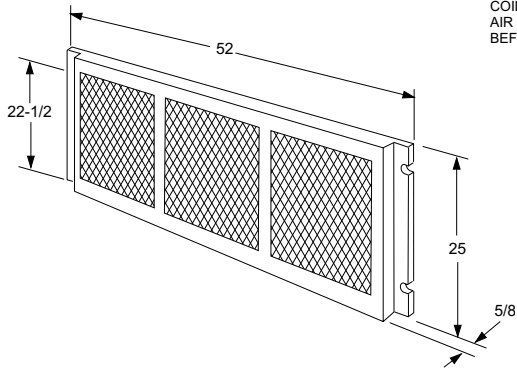


COIL INSTALLS OVER THE RETURN AIR OPENING OF THE UNIT - BEFORE THE FILTERS.

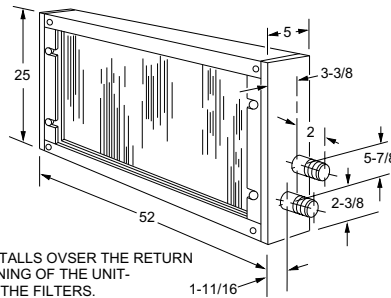
### BASE



### RETURN AIR GRILLE



### HOT WATER COIL



COIL INSTALLS OVER THE RETURN AIR OPENING OF THE UNIT - BEFORE THE FILTERS.

**NOTES:** \_\_\_\_\_  
 \_\_\_\_\_  
 \_\_\_\_\_  
 \_\_\_\_\_  
 \_\_\_\_\_