

JOB NAME _____ **LOCATION** _____
PURCHASER _____ **ORDER NO.** _____
ENGINEER _____
SUBMITTED TO _____ **FOR:** Reference Approval Construction
SUBMITTED BY _____ **DATE** _____

UNIT DESIGNATION: Schedule No. _____ **MODEL NO.** _____

PRODUCT DATA

COOLING PERFORMANCE

TOTAL CAPACITY
 MBH
 SENSIBLE CAPACITY
 MBH
 OUTDOOR DESIGN TEMP..
 / ____ °F DB/WB
 TOTAL SUPPLY AIR
 CFM
 TEMP. OF AIR ENTERING
 INDOOR COIL

/ ____ °F DB/WB
 POWER INPUT REQUIREMENT
 KW
 (less blower motor)

HEATING PERFORMANCE

CAPACITY @ 47°F
 MBH
 @ 17°F
 MBH

COEFFICIENT OF PERFORMANCE
 @ 47°F
 COP
 @ 17°F
 COP

(RESISTANCE HEAT -
 See Reverse Side)

SUPPLY AIR BLOWER PERFORMANCE

TOTAL SUPPLY AIR
 CFM
 TOTAL RESISTANCE EXTERNAL
 TO UNIT.
 IWG
 BLOWER SPEED

CLEARANCES

Front	32"
Back	12" (Less Economizer) 36" (With Economizer or Fixed Air/Motorized Damper)
Left Side (Filter Access)	24" (Less Economizer) 36" (With Economizer)
Right Side (Outdoor Coil)	24"
Below Unit ¹	0"

¹ Units may be installed on combustible floors made from wood or class A, B or C roof covering material.

² Units must be installed outdoors. Overhanging structures or shrubs should not obstruct outdoor air discharge outlet.

NOTE:
 Units and ductwork are approved for zero clearance to combustible materials when

FEATURES

- Ambient Modified` - Time/Temperature Defrost
- Complete Factory Package
- Hermetically Sealed Compressor
- Vertical Discharge Outdoor Fan
- Direct-Drive Blower Motor on All Models
- Belt-Drive Blower Motor on 3, 4 & 5 Ton, 3-phase Models
- Unit Underside Insulated
- Suction Line Accumulator
- Bottom OR Side Duct Connections
- Low Voltage Relay Board with Thermostat Terminal Strip
- PTC Type Crankcase Heaters
- Bi-Directional Liquid Line Filter-Drier
- Plug-Type Wiring Harness Connectors
- Compressor Lockout Circuit
- High Pressure Switch
- Low Pressure Switch
- High Discharge Temperature Switch
- Copper Tube/Aluminum Fin Coils
- Easy Access to All Electrical Components
- Rigging Holes and Forklift Slots in Base Rails for Lifting
- Single Point Power Connection
- Factory Charged - Sealed R-22 System
- Agency Approvals:
 - UL and CGA
- Factory Limited Parts Warranty
 - One Year on the Complete Unit
 - Four Additional Years on the Compressor
 - Four Additional Years on the Electric Heating Elements

FIELD INSTALLED ACCESSORIES

- ROOF CURB.
- OUTDOOR COIL GUARD.
- BAROMETRIC RELIEF AIR DAMPER
- START ASSIST KIT (Single Phase Units)
- MOTORIZED OUTDOOR AIR DAMPER
- MANUAL OUTDOOR AIR DAMPER, 0 - 35%
- MANUAL OUTDOOR AIR DAMPER, 0 - 100%
- COMPRESSOR CYCLE TIMER
- OUTDOOR THERMOSTAT
- FUSE BLOCK KIT
- ECONOMIZER
 Single Input Enthalpy Control
 Dual Input Enthalpy Control
- RESISTANCE HEAT*
 Capacity (At _____ Volts) _____ MBH
 Power Input Requirement _____ KW

FACTORY INSTALLED OPTIONS

- BELT-DRIVE INDOOR FAN

Subject to change without notice. Printed in the U. S. A.

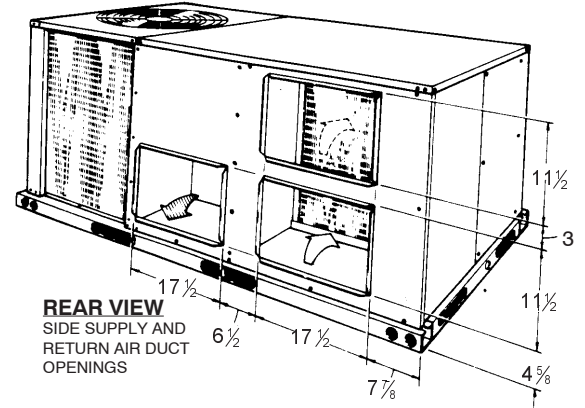
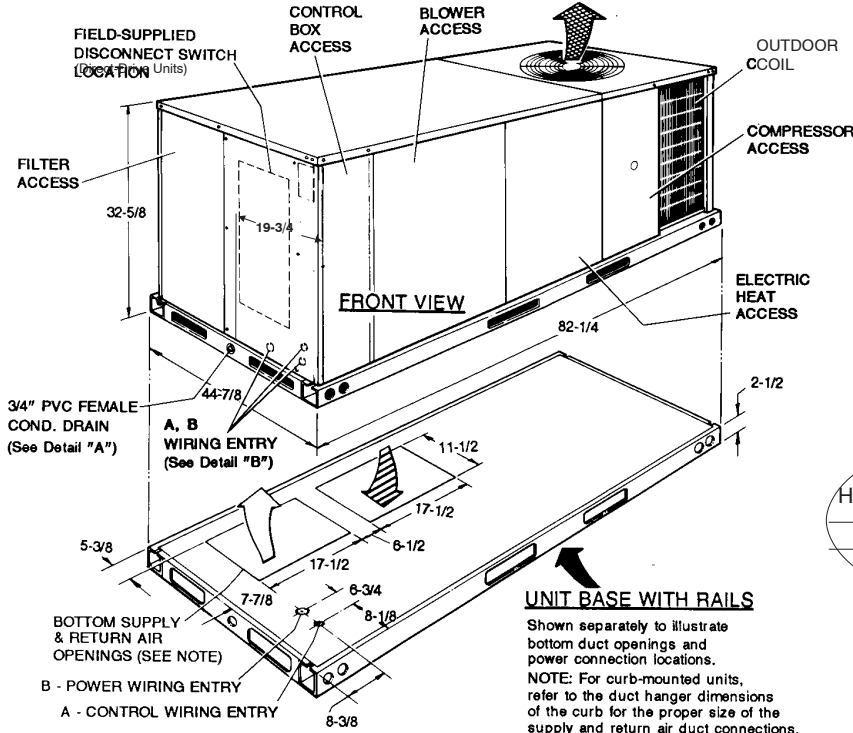
SINGLE PACKAGE, HEAT PUMPS
3, 4 & 5 TONS (10 SEER)
MODELS B__CB036, 048 & 060

FORM 511.06-SD1L (798)

Supersedes: 511.06-SD1L (993)



DIMENSIONS - INCHES

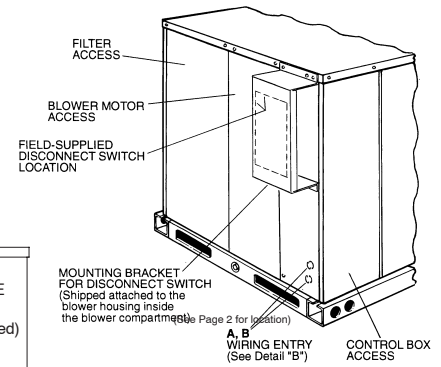


UTILITIES ENTRY DATA

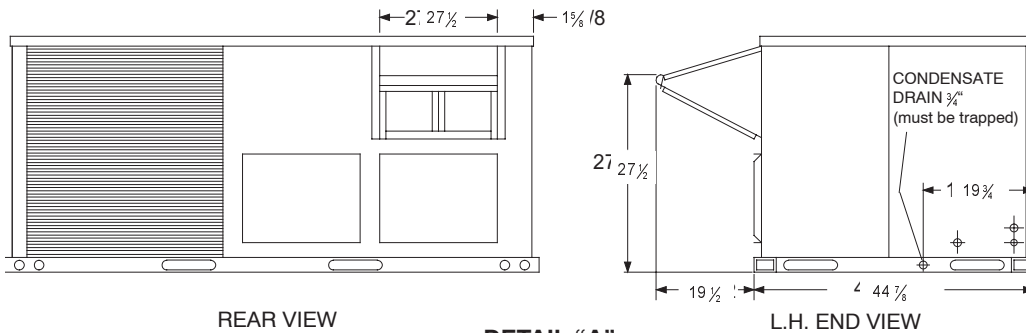
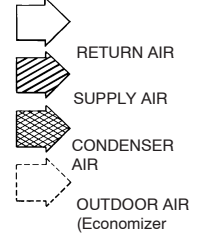
HOLE	KNOCKOUT SIZE (DIA.)	USED FOR
A	7/8"	Control Wiring (Side or Bottom)
D	1-1/2"	Gas Piping (Bottom)

UNIT BASE WITH RAILS

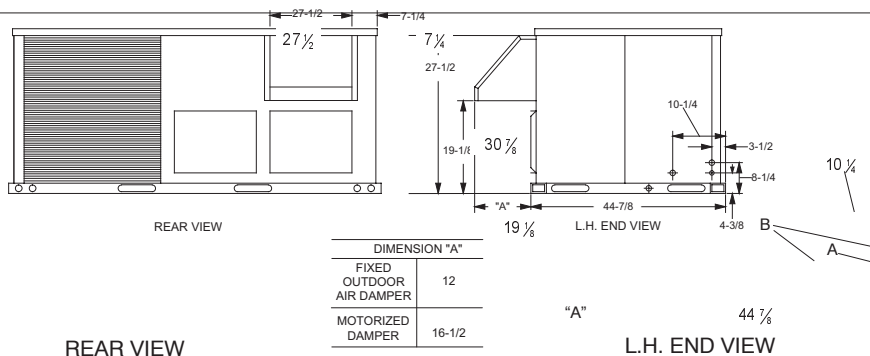
Shown separately to illustrate bottom duct openings and power connection locations.
 NOTE: For curb-mounted units, refer to the duct hanger dimensions of the curb for the proper size of the supply and return air duct connections.



DISCONNECT SWITCH LOCATION AND MOTOR ACCESS PANEL FOR UNIT WITH "BELT-DRIVE" OPTION



DETAIL "A" UNIT WITH ECONOMIZER RAINHOOD



DIMENSION "A"	
FIXED OUTDOOR AIR DAMPER	12
MOTORIZED DAMPER	16-1/2

DIMENSION "A"	
FIXED OUTDOOR AIR DAMPER	12
MOTORIZED DAMPER	16 1/2

Copyright © 1998 by Unitary Products Group - ALL RIGHTS RESERVED

NOTES:
