

SUBMITTAL DATA SHEET

SINGLE PIECE AIR HANDLER SPLIT-SYSTEM FAN COIL MODELS: F*FP / F*FV

JOB NAME:			LOCATION:		
PURCHASER:			ORDER NO.:		
ENGINEER:					
SUBMITTED TO:		FOR:	REF:	APPROVAL:	CONSTRUCTION:
SUBMITTED BY:			DATE:		
UNIT DESIGNATION:			SCHEDULE NO.	MODEL NO.	

PRODUCT DATA

Cooling Performance

Total Capacity* _____ MBH
Sensible Capacity* _____ MBH
Temperature of Air Entering
Indoor Coil _____ °F (DB/WB)

Supply Air Blower Performance

Total Supply Air _____ CFM
Total External Static
Pressure _____ IWG
Blower Speed (circle) _____ HI MH ML L
Motor Rating _____ HP
Power Input Requirement _____ KW

Electrical Data

Power Supply _____ / /
Total Unit Ampacity _____ AMPS
Minimum Wire Size _____ AWG
(Copper conductors)
Maximum Overcurrent Device
 Fuses (Dual Element)
 Circuit Breaker (HACR)

Unit Weight

Total Unit Weight _____ LBS
(Include field-installed accessories)

Options

Factory Installed TXV

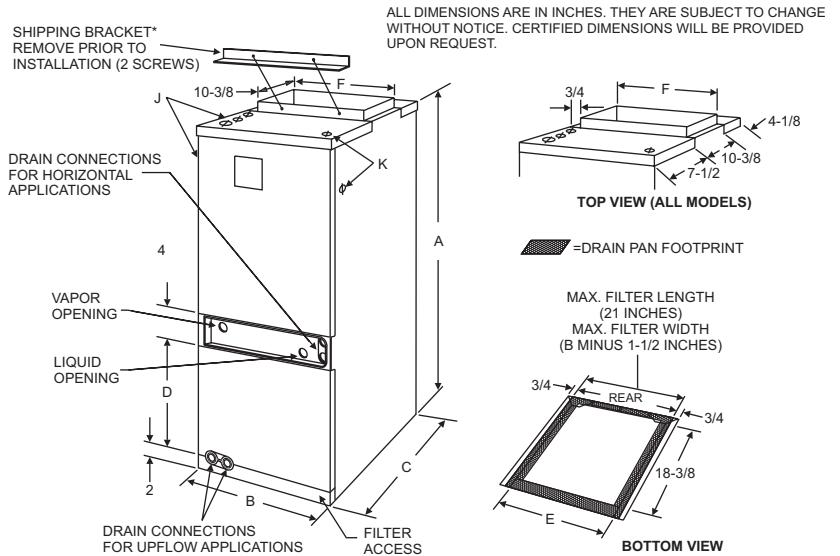
* Shown in Outdoor Unit Technical Guide

RECOMMENDED CLEARANCES

Front	24"
Rear	1"
Sides	1"

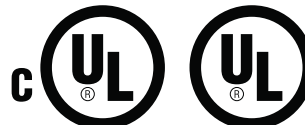
* 0 Clearance allowed when Electric Heater is not installed.

DIMENSIONS - INCHES



Model F*FP F*FV	Dimensions						Wiring K.O.'s ¹		Refrigerant Connections Line Size	
	A	B	C	D	E	F	J	K	LIQUID	VAPOR
	Height	Width	Depth				POWER	CONTROL		
024	40-3/4	18	22	12-1/8	14-7/8	16-1/2	7/8 (1/2) 1-3/8 (1)	7/8 (1/2)	3/8	5/8
030	40-3/4	18			14-7/8	16-1/2				3/4
036	40-3/4	21-1/2			18-3/8	20				3/4
040	40-3/4	21-1/2			18-3/8	20				7/8
042	40-3/4	21-1/2			18-3/8	20	7/8			
045	50-3/4	24			17-3/8	20-7/8	22-1/2			1-23/32 (1-1/4)
048	50-3/4	24	20-7/8	22-1/2		7/8				
060	50-3/4	24	20-7/8	22-1/2		7/8				

- Actual conduit size is shown in parenthesis.
- All models only available with factory installed horizontal drain pan.



FEATURES

- Cooling or Heat Pump Applications
- Durable pre-painted steel earthtone cabinet
- Upflow and horizontal positioning
- Compact cabinet
- Plastic drain pans
- Flexible return air
- Copper tube / aluminum fin coil
- Direct drive, multi-speed motor
- Optional variable speed ECM motor (5 ton only)
- Easily installed electric heat accessories (1 & 3 Ø)
- Color coded control wiring
- Slide-out blower and coil / drain pan assemblies for servicing.
- All models have a factory installed TXV metering device
- 3/4" Thermal Insulation

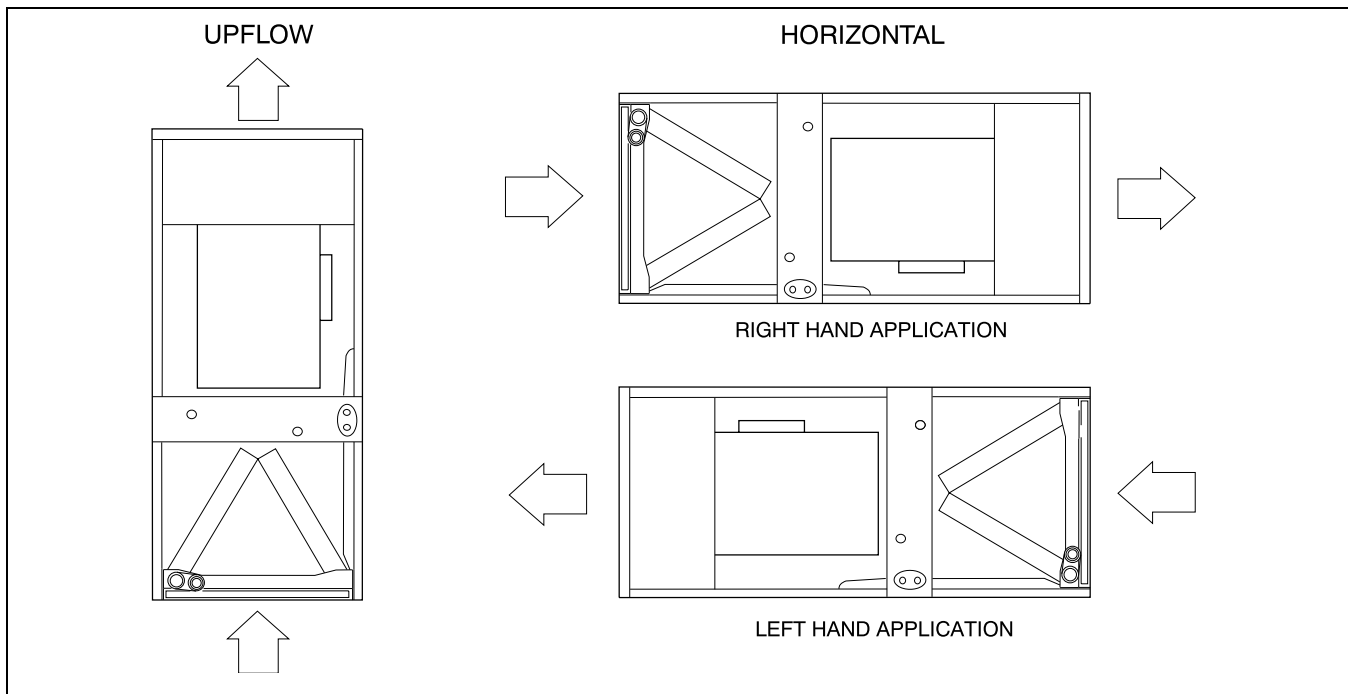
FIELD INSTALLED ACCESSORIES

- Stub Adapters (# _____)
- Precharged Line Sets (# _____)
- Electric Heaters (# _____)
- Capacity (@ _____ Volts) _____ MBH
- Power Input Requirement (Less Blower Motor) ____KW
- Suspension Kit (_____)
- Thermal Expansion / Check Valve Kit (# _____)

MATCHED OUTDOOR UNIT

- Model Number (# _____)
- Submittal Part Number (# _____)

TYPICAL APPLICATIONS



NOTES:
