

JOB NAME _____ LOCATION _____
 PURCHASER _____ ORDER NO. _____
 ENGINEER _____
 SUBMITTED TO _____ FOR: Reference Approval Construction
 SUBMITTED BY _____ DATE _____

UNIT DESIGNATION: Schedule No. _____ MODEL NO. _____

PRODUCT DATA

COOLING PERFORMANCE

TOTAL CAPACITY MBH
 SENSIBLE CAPACITY MBH
 EVAPORATOR PRESSURE
 AT SATURATION PSIG
 EVAPORATOR TEMPERATURE
 AT SATURATION °F
 TOTAL SUPPLY AIR CFM
 TEMP. OF AIR ENTERING
 EVAPORATOR COIL / °F DB/WB

HEATING PERFORMANCE

Refer to field-installed accessories on reverse side.

SUPPLY AIR BLOWER PERFORMANCE

TOTAL SUPPLY AIR CFM
 TOTAL RESISTANCE EXTERNAL
 TO UNIT IWG
 BLOWER SPEED RPM
 POWER OUTPUT REQUIREMENT .. BHP
 MOTOR RATING HP
 POWER INPUT REQUIREMENT KW

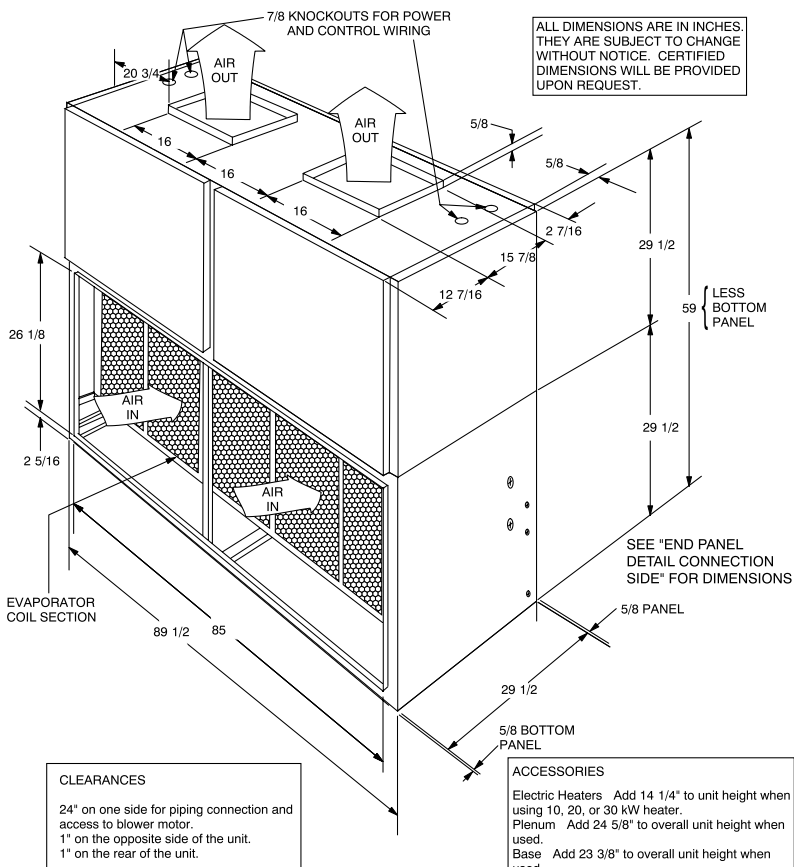
ELECTRICAL DATA

POWER SUPPLY / /
 TOTAL UNIT AMPACITY AMPS
 MINIMUM WIRE SIZE AWG
 (Copper Conductors)
 MAXIMUM FUSE SIZE
 DUAL ELEMENT AMPS

UNIT WEIGHT

TOTAL OPERATING WEIGHT LBS.
 (Including field-installed accessories)

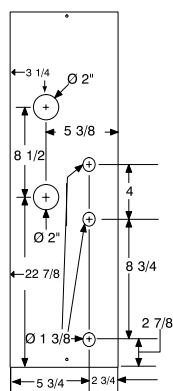
DIMENSIONS – INCHES



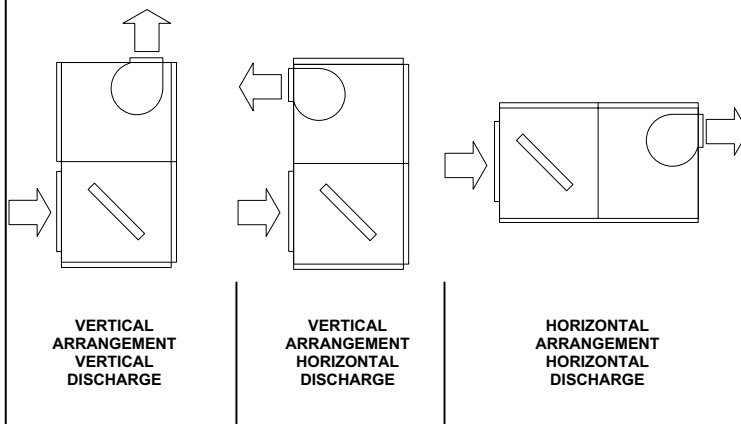
CLEARANCES
 24" on one side for piping connection and access to blower motor.
 1" on the opposite side of the unit.
 1" on the rear of the unit.

ACCESSORIES
 Electric Heaters Add 14 1/4" to unit height when using 10, 20, or 30 kW heater.
 Plenum Add 24 5/8" to overall unit height when used.
 Base Add 23 3/8" to overall unit height when used.

END PANEL DETAIL CONNECTION SIDE



INSTALLATION CONFIGURATION



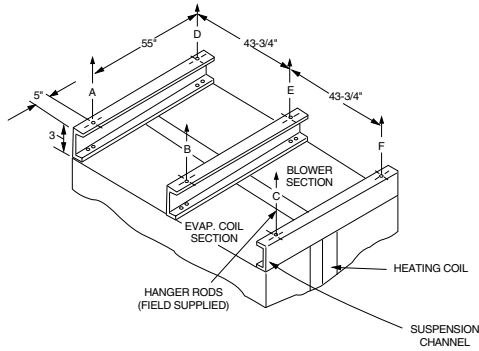
SPLIT-SYSTEM EVAPORATOR BLOWERS
20 TONS
MODEL F_HP240

FORM: 036-22802-001-A-0803

Supersedes: Nothing



SUSPENSION MOUNTING (Horizontal Application)



SUSPENSION WEIGHTS, LBS.					
A	B	C	D	E	F

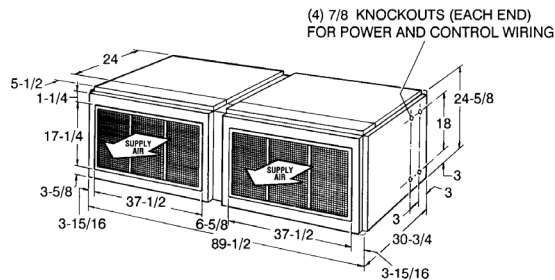
DIMENSIONS, IN.	
A	B

Four 3/8" - 16 weld nuts are provided in the unit support angles for ceiling suspension. Knockouts are provided in panels for access to these weld nuts. Support rods must be supplied in the field.

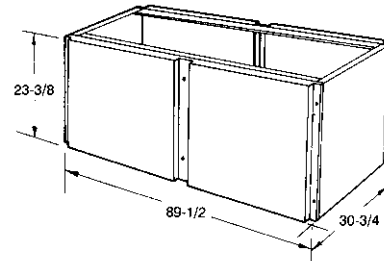
FIELD-INSTALLED ACCESSORIES

- SUPPLY AIR PLENUM (1SP0405)
- RETURN AIR GRILLE (1RG0405)
- BASE (1BS0405)
- (Vertical Application Only)
- ELECTRIC HEATER*
- Model Number _____
- Capacity (@ _____ Volts) MBH
- Power Input Requirement KW
- (Less Blower Motor)

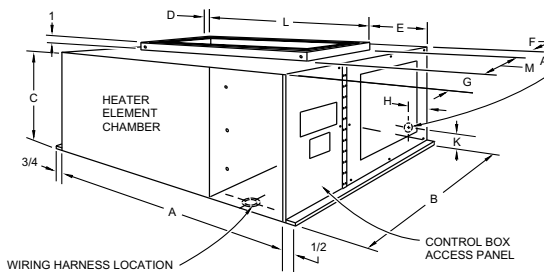
ACCESSORY DIMENSIONS - INCHES



SUPPLY AIR PLENUM

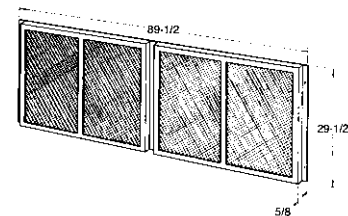


BASE ACCESSORY



WIRING HARNESS LOCATION
This opening in the bottom of the heater control box is used for the wiring harness that connects the heater accessory to the basic unit. It is provided with a squeeze connector for securing the wiring harness, and its location corresponds to the location of the 1-23/32 inch knockout in the top panel of the basic unit.

ACCESS OPENING FOR POWER SUPPLY WIRING
10KW THRU 30KW - Add a 1-1/4 inch conduit fitting to the 1-23/32 inch hole for wire sizes up through #1 AWG. Remove the knockout ring and add a 1-1/2 inch conduit fitting to the 1-31/32 inch hole for wire sizes up through #0 AWG.
50 KW - Add a 1-1/4 inch conduit fitting to the 1-23/32 inch hole for wire sizes up through #11 AWG. Remove the knockout ring and add a two-inch conduit fitting to the 2-1/2" hole for wire sizes up through #000 AWG. Used on FEH180 only.



RETURN AIR GRILLE

Heater Model ¹	Nom. kW	Heater Dimensions (inches)												
		A	B	C	D	E	F	G	H	K	L	M		
2HB04501025, 46	10													
2HB04502025, 46	20	27-1/4	25-1/4	14-1/4	1	4	1/2	5-1/2	1-1/2	1-1/2	22-1/4	19-1/4		
2HB04503025, 46	30													
2HP04505025, 46	50	29-7/8	26-3/8	21-3/4	2-3/8	5-1/4	3/4	6-3/4	2-1/4	2-1/2	22-1/4	19-1/4		

¹ 2HC04501025, 46 and 2HC04502025, and 46 are used on the FEH240 units only. The dimensions are the same as shown above for the 2HB heaters. The 2HB heaters are installed on the drive side of the FEH240 and the 2HC heaters are installed on the opposite side.

NOTES: _____
