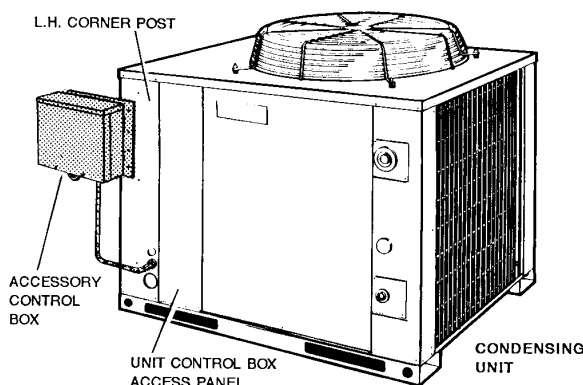


ACCESSORY KIT INSTALLATION INSTRUCTIONS

0°F LOW AMBIENT ACCESSORY MODELS 2LA04702025, 2LA04702146 & 2LA04701958 FOR 208/230, 460 & 575 VOLT APPLICATIONS

FOR 7.5, 10 & 12.5 TON SPLIT-SYSTEM CONDENSING UNITS
MODELS HCE090, 120 & 150 / HHB090, 120 & 150 / HA090, 120 / HF-7, -10



GENERAL

Standard split-system condensing units are designed to operate at ambient temperatures down to 45°F. To operate safely at ambient temperatures down to 0°F, a low ambient accessory will be required.

This instruction provides all the necessary information to properly field-install a low ambient accessory on the condensing units listed above. Components that are supplied in the respective accessory are listed in Table 2. The accessory mounting plate, some electrical components and some hardware are to be field supplied as indicated in this instruction.

Refer to Table 1 for application data and the recommended auto-transformer connections.

NOTE: Wire in accordance with all local and N.E.C. class 1 wiring requirements.

TABLE 1: APPLICATION DATA

ACCESSORY MODEL NO.	UNIT MODEL NO.	LINE VOLTAGE (3 PHASE / 60 HZ.)	AUTO-TRANSFORMER LEADS	
			VOLTAGE	COLOR
2LA04702025	HCE090, HHB090	208 / 230	91	RED
	HA090, 120 / HF-07, -10		158	TAN
	HCE120, 150 / HHB120, 150		158	TAN
2LA04702146	HCE090, HHB090	460	188	RED
	HA090, 120 / HF-07, -10		316	TAN
	HCE120, 150 / HHB120, 150		316	TAN
2LA04701958	HA090, 120 / HF-07, -10	575	316	TAN
	HCE120, 150 / HHB120, 150		316	TAN
	HCE090, HHB090		212	RED

INSTALLATION

Install the low ambient accessories as follows:

1. Disconnect all electrical power to the unit.
2. Remove the unit control box access panel.
3. Field-fabricate a 16 gauge (8" X 8") galvanized steel plate for mounting the accessory electrical box. Refer to Figure 1 for the required hole sizes, hole locations and location of the plate for mounting to the unit.
4. Using the mounting plate as a template, mark and drill four 3/16" holes. Fasten the mounting plate to the unit with four #8 x 1/2" sheet metal screws (field supplied) .
5. Remove the cover from the 8" x 8" x 4" electrical box (provided) and secure the box to the mounting plate using four 1/4" bolts, nuts, washers, and lockwashers (field supplied) or other suitable hardware.

CAUTION

Exercise care when drilling holes into the unit so that nothing is punctured or damaged on the inside.

6. Remove the 1/2" and 3/4" knockout from the bottom of the accessory electrical box and the 7/8" knockout from the unit (location shown in Figure 1).

TABLE 2: PARTS SUPPLIED WITH ACCESSORY

ITEM	QTY.	PART NO.	DESCRIPTION
1	1	025-27756-001	Electrical Box - 8" x8" x 4
2*	1	025-22202-000	Terminal Block
3*	1	025-27760-001	Temperature Control
4	1	025-23120-000	Insulator Block
5*	1	025-27752-000	Control Transformer
		025-27753-000	
		025-27754-000	
6	1	035-08755-000	Wiring Label
		035-08756-000	
		035-08540-000	
		035-08739-000	
7	1	035-13052-000	Accessory Instruction

*. These items are factory assembled inside of the electrical box.
All other items are shipped loose inside of the electrical box.

7. Field supply three wires and conduit (with water tight fittings) between the low ambient control box and the unit control box. Minimum wire size to be 14 AWG. See Figures 2, 3 and 4 for typical low ambient accessory wiring.

NOTE: Allow sufficient length to form a drip loop at the unit entry to divert rain water away from the unit.

8. Connect the recommended auto transformer lead for the respective accessory as shown in Table 1.

CAUTION

Make sure all other leads from the auto transformer are adequately taped and make no electrical contact.

9. On H*CE/H*HB090 units remove the existing wire connecting the condenser fan motor capacitor (1RC) and the load side of the contactor. See Figure 2.
10. On H*CE/H*HB120, 150 units remove the wire connecting (1RC & (2RC). Connect the common side of (2RC) to the load side of the contactor so that this fan motor #2 operates normally as controlled by the ambient temperature switch (ATS). See Figure 3.
11. On HA090, 120/HF-07, -10 units remove the wire connecting (2RC) to the load side of the contactor, leaving condenser fan motor #1 connected so that it operates normally as controlled by the pressure switch (PS). See Figure 4.
12. Connect the three wires indicated in Step 7 to the proper terminations between the accessory control box and the unit control box. Refer to Figure 2 or the respective wiring label furnished with the accessory.

CAUTION

Adjust all wires for proper slack and tighten the screws on all connector clamps to secure in position. All wires should be cabled and secured with cable straps.

13. Attach the respective accessory wiring label to the inside of the unit control box access panel. Do not cover any existing labels. (Discard unused labels.)
14. Replace the accessory control box cover and the unit control box access panel.
15. Reconnect power to the unit.

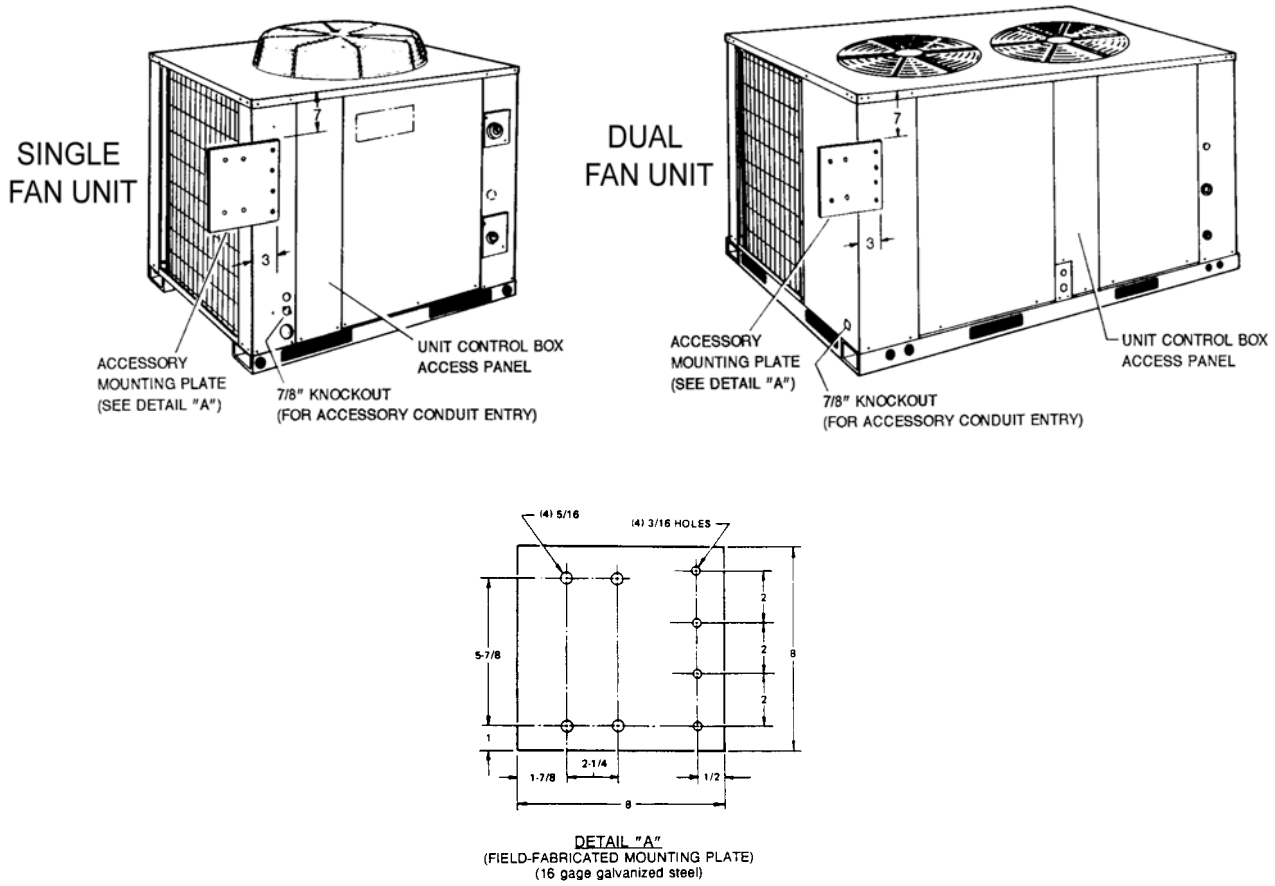


FIGURE 1 - ACCESSORY MOUNTING PLATE LOCATION

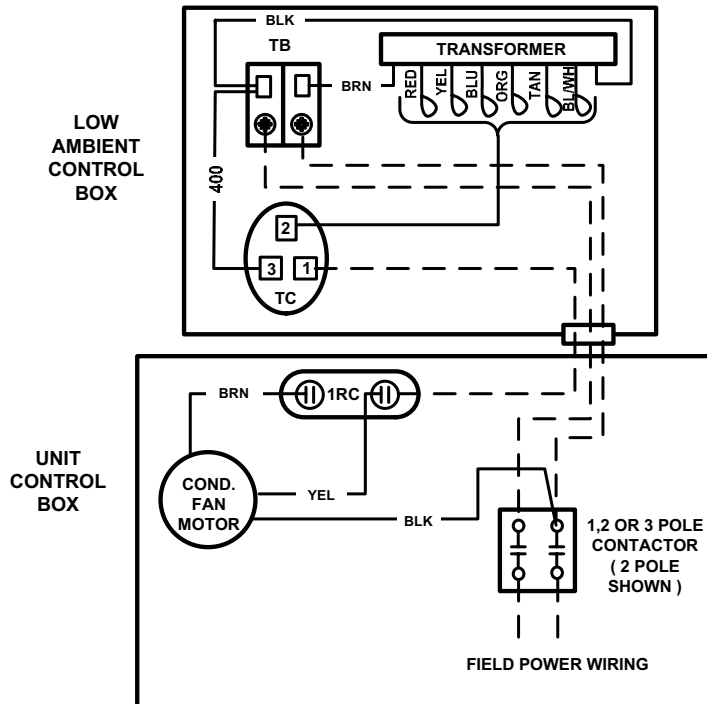


FIGURE 2 - HCE / HHB 090 CONNECTION DIAGRAM

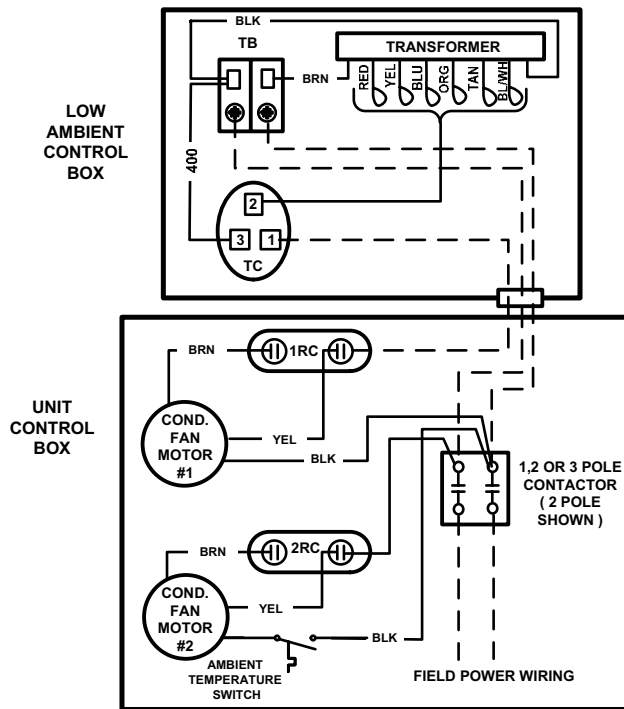


FIGURE 3 - HCE / HHB 120, 150 CONNECTION DIAGRAM

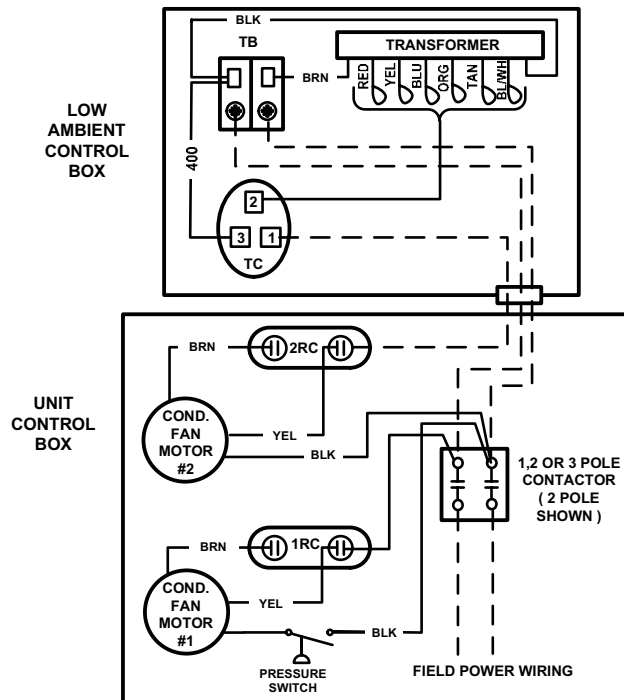


FIGURE 4 - HA 090, 120 / HF-07, -10 CONNECTION DIAGRAM