

SUBMITTAL DATA SHEET

OIL-FIRED WARM AIR UPFLOW / HORIZONTAL, DOWNFLOW / HORIZONTAL AND LOWBOY FURNACES MODELS: P*HM, P*DH, P*LB

JOB NAME:			LOCATION:		
PURCHASER:			ORDER NO:		
ENGINEER:					
SUBMITTED TO:		FOR:	REF:	APPROVAL:	CONSTRUCTION:
SUBMITTED BY:			DATE:		
UNIT DESIGNATION:			SCHEDULE NO.	MODEL NO.	

PRODUCT DATA

Heating Performance

Input Capacity _____ MBH
 Output Capacity _____ MBH
 Air Temp. Rise _____ °F

Supply Air Blower Performance

Total Supply Air _____ CFM
 Total External Static Pressure _____ IWG
 Blower Speed (circle) _____ HI MH ML L
 Motor Rating _____ HP

Electrical Data

Power Supply _____ / _____ / _____
 Total Unit Ampacity _____ AMPS
 Minimum Wire Size _____ AWG
 Maximum Overcurrent Device
 Fuses Circuit Breaker _____ AMPS

Unit Weight

Total Unit Weight _____ LBS

FEATURES

- Proven circular heat exchanger - 16 gauge all welded construction on P*HMX and P*LBX (except P4LBX20F19001)
- Hard cast ceramic combustion chamber for proper flame control and long reliability
- Industry standard Beckett "AF" series flame retention head burner
- Industry standard controls and components used throughout the furnace for easy service and parts availability
- All models are equipped with fan relay for easy add-on air conditioning (except P4LBX20F19001-heating only)
- All models are approved for multiple firing rates for easy application
- Dedicated highboy (upflow) and lowboy models eliminate field conversion
- Heavy 20 gauge cabinet for strength and quiet operation
- Quiet four-speed direct drive blower motors on most models

FIELD INSTALLED ACCESSORIES

Combustible Floor Base

- 1CB1312 = For P3DHX12 model
- 1CB0416 = For P2DHX16 model
- 1VP1280 VESTIBULE PANEL FOR P3DHX12F08001



DIMENSIONS - INCHES

TABLE 1: P4DHX12F08001

MODELS	CABINET			PLENUM OPENINGS			FLUE	FILTER		SHIPPING WEIGHT
	Width (A)	Depth (B)	Height (C)	Supply Air (D x E)	Return Air		Dia. (H)	Type	Size	
					Side (K x L)	Bottom (F x G)				
P4DHX12F08001	22	22-1/8 ¹	55-1/4	19 x 19	14 x 22	18 x 18	5	Permanent	16 x 25 x 1	265 lb.
P4DHX16F12001	22-1/4	22-1/4 ¹	62	20-1/2 x 20-1/2	18 x 18	18 x 18	6	Permanent	20 x 20 x 1	292 lb.

¹ Add 8-1/2 inches to allow for burner, (30-3/4 inches total).

Add 8-3/4 inches to allow for add-on vestibule cabinet, (31 inches total). All dimensions in inches.

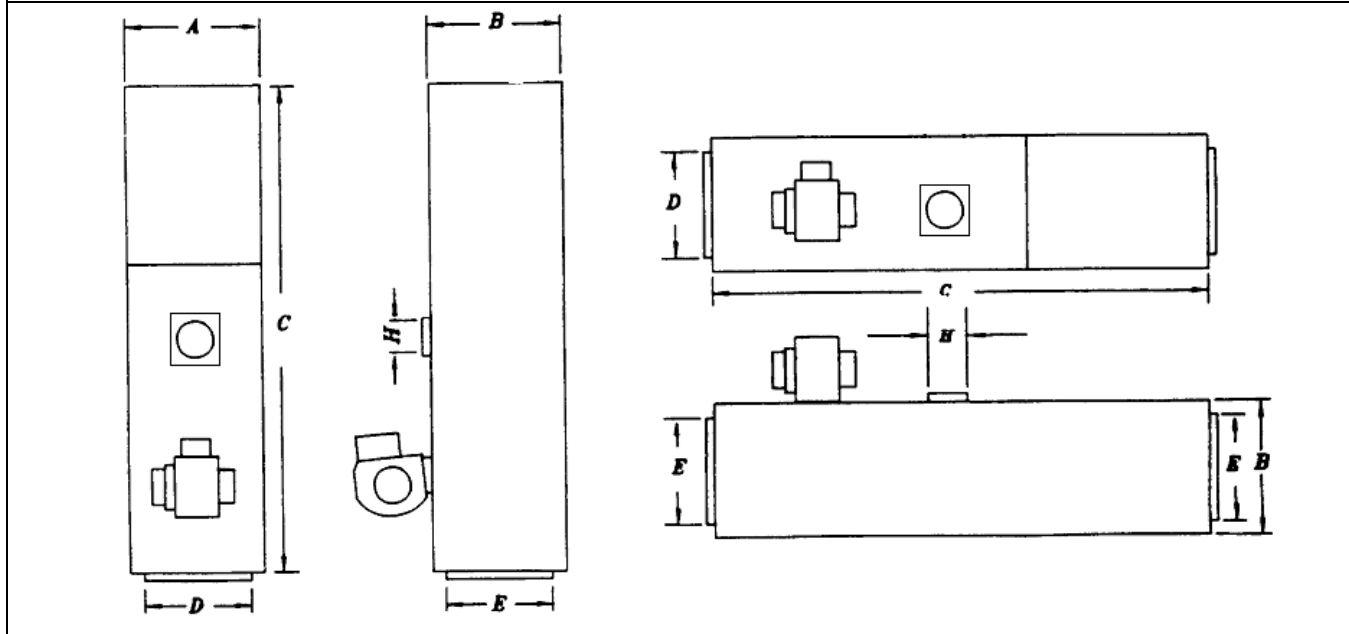


TABLE 2: P2L BX16F14501

CABINET			PLENUM OPENINGS			FLUE		FILTER	SHIPPING WEIGHT
Width (A)	Depth (B)	Height (C)	Supply Air (D x E)	Return Air (D x G)	Gap (F)	Dia. (H)	Height (J)		
22	51-1/2	41	20-1/2 x 18-5/8	20-1/2 x 18-5/8	1-3/4	6	34-3/8	20 x 25 x 1	290 lb.

All dimensions in inches.

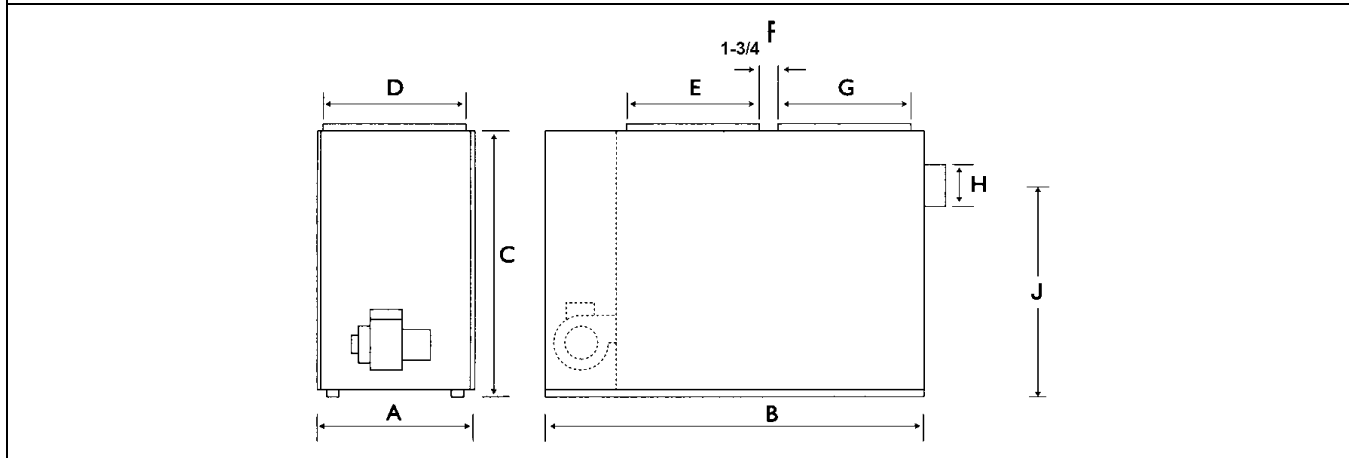
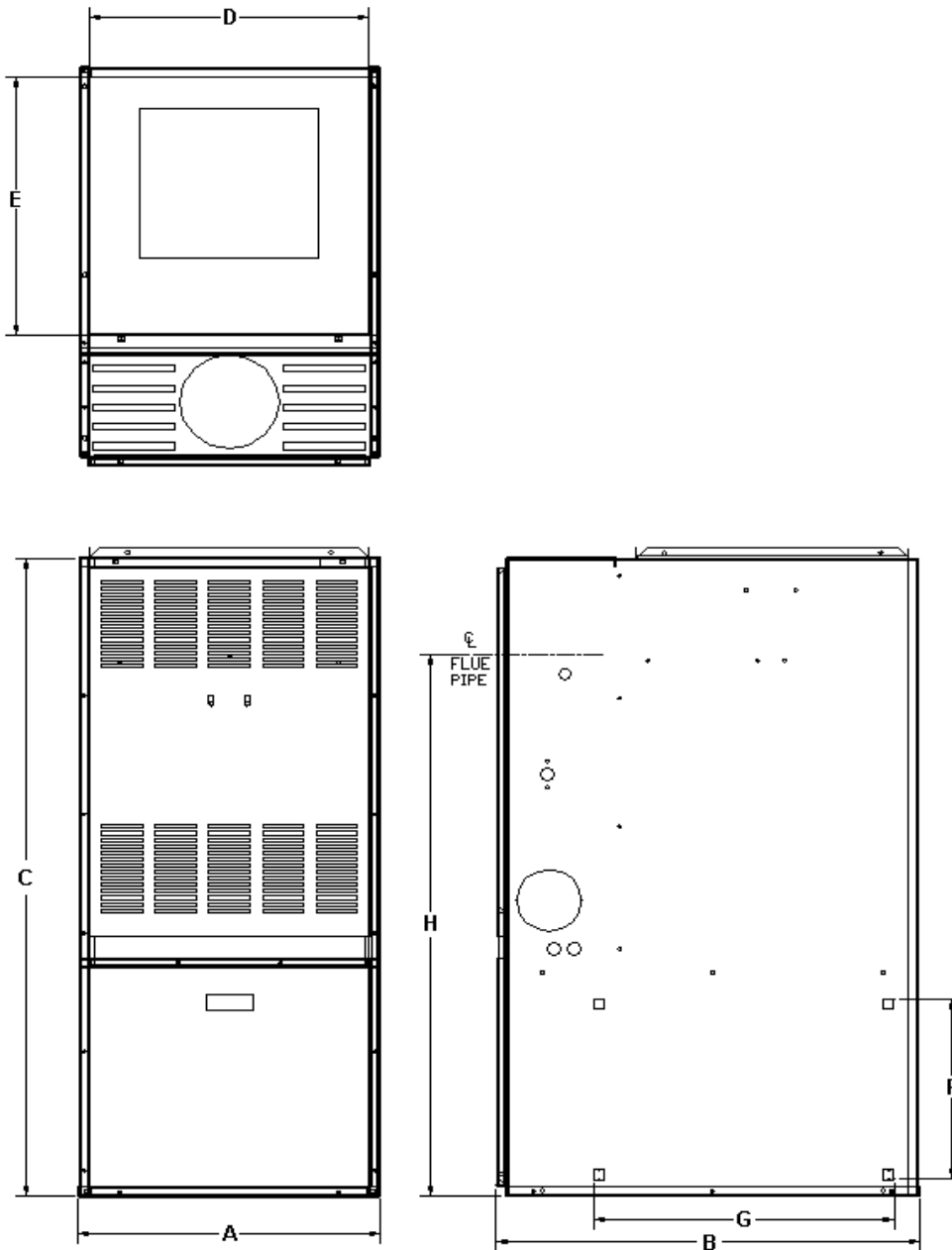


TABLE 5: P*HMX MODELS

CABINET			PLENUM OPENINGS			FLUE		FILTER (PERM.)	SHIP WEIGHT (LB.)
Width	Depth	Height	Supply Air	Return Air		Diameter	Height		
				Side	Bottom				
A	B	C	D x E	F x G			H		
P*HMX12F08001									
22	31	49-1/2	20-1/2 x 20	14 x 22	14 x 22	5	42	16 x 25 x 1	190
P*HMX14F10001 AND P*HMX20F12001									
22	31	58-1/8	20-1/2 x 20	14 x 22	14 x 22	6	46-1/2	16 x 25 x 1	270



Subject to change without notice. Printed in U.S.A.
 Copyright © by York International Corp. 2005. All rights reserved.

036-22960-001 Rev. A (0605)
 Supersedes: 660-08-SD1C (0300), 660-08-SD1L (897),
 660-08-SD1F (0897), 036-22602-001 Rev. A (1003)