

ACCESSORY KIT INSTALLATION INSTRUCTIONS

SUSPENSION MOUNTING ACCESSORIES MODELS 1HH0451, 1HH0403, 1HH0404 & 1HH0405

1HH0451 INSTRUCTIONS

GENERAL

This documentation provides installation guidelines for installing the horizontal suspension kits for models LF/LL-15, -20, -25, -30, -40, -50 and LA/LB 180, 240, 300, 360, 480 and 600.

The following instruction provides the necessary information to properly install this suspension accessory (1HH0451) on an evaporator blower. (Models LA/LB 180 & LF/LL-15).

This accessory may be used to suspend units for horizontal applications or as a base to raise vertical units 3" off the condensate drainage.

INSTALLATION

Prepare unit for horizontal suspension per the following procedure. Refer to Figures 1 and 2.

1. Remove and discard the 1/4" screws that hold the unit top panels in place.
2. Remove and discard the 1/4" retainer nuts from the unit frame to permit installation of 5/16" bolts provided in the accessory.

3. Place suspension channels on the unit and secure with the bolts, spacers, nuts and washers provided. See Figure 3.

The suspension channels require no cutting or drilling. The bottom flange of each channel has enough holes to provide four bolted connections to the coil section and to the blower section at existing hole locations in the unit top panels and in the channel flange.

Each channel is provided with holes in its top flange for suspension rods or supports to suspend the unit. When vibration eliminators are required on a suspended unit, pre-engineered spring suspension rods (available locally), can be used.

NOTE: The bottom flange of the suspension channels contains double sets of holes so that a 20 ton unit, with or without a heating coil accessory, may be suspended. Excess length of channel ends may be trimmed off, if desired, when units are to be suspended without a heating coil accessory.

When floor-mounting a unit for a vertical application, suspension channels may be cut in half and used under the coil section to raise unit 3" above the floor.

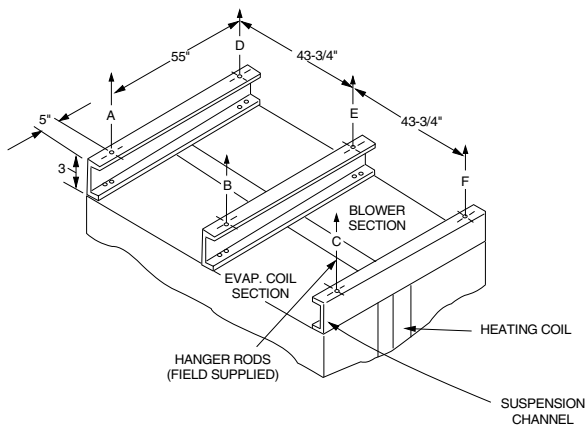


FIGURE 1: SUSPENSION ACCESSORY ARRANGEMENT (15 TON UNITS)

BASIC UNIT SUSPENSION POINT (Lbs.) -15-TON

SUSPENSION POINT	W/ 3HP MOTOR*
A	142
B	132
C	152
D	162
E	132
F	127
Total Weight	847

* Motor location at suspension point "F".

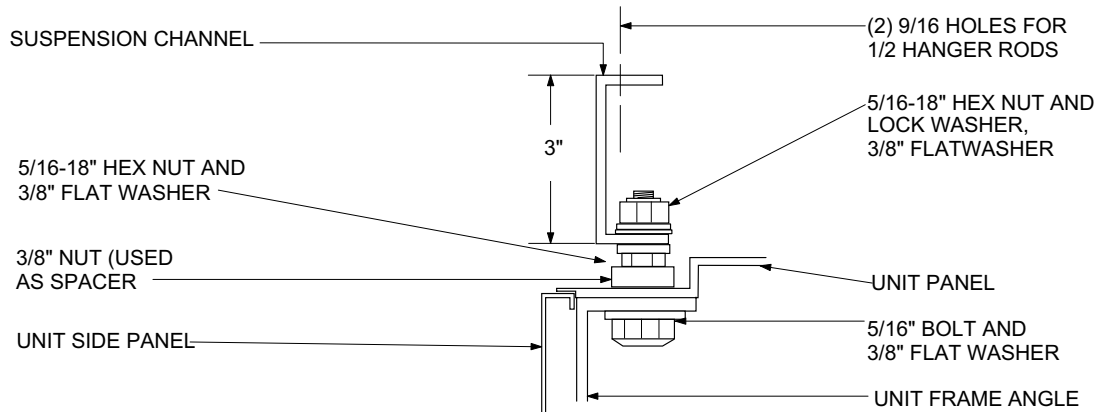


FIGURE 2: TYPICAL SUSPENSION CHANNEL MOUNTING - 15 TON

SUSPENSION ACCESSORY (1HH0451) PARTS LIST

QUANTITY	DESCRIPTION	PART NUMBER
6	CHANNEL, 1-1/2" X 3" X 65" Lg.	063-21276
30	BOLT, HEX. 5/16" - 18 X 1 - 1/2" Lg.	021-02783
90	WASHER, FLAT 3/8	"021-09983
30	LOCK WASHER, SPRING 5/16	"021-08697
30	NUT, HEX. 3/8" - 16 UNC-2B	021-00467
60	NUT, HEX. 5/16" - 18 UNC-2B	021-02523
1	INSTRUCTION (550.13-N7.1V)	035-16622

NOTE: Materials provided in this accessory will suspend (3) 15 ton units.

1HH0403, 404 & 405 INSTRUCTIONS

GENERAL

The following instruction provides the necessary information to properly install these suspension accessories on 20, 25, 30, 40 and 50 ton evaporator blowers. (Models LF/LL -20 & LA/LB 240, 300, 360, 480 & 600).

These accessories may be used to suspend units for horizontal applications or as a base to raise vertical units 3" off the floor for condensate drainage.

INSTALLATION

Prepare unit for horizontal suspension per the following procedure. Refer to Figures 1 and 2.

1. Remove and discard the 1/4" screws that hold the unit top panels in place.
2. Remove and discard the 1/4" retainer nuts from the unit frame to permit installation of 5/16" bolts provided in the accessory.
3. Place suspension channels on the unit and secure with the bolts, spacers, nuts and washers provided. See Figure 2.

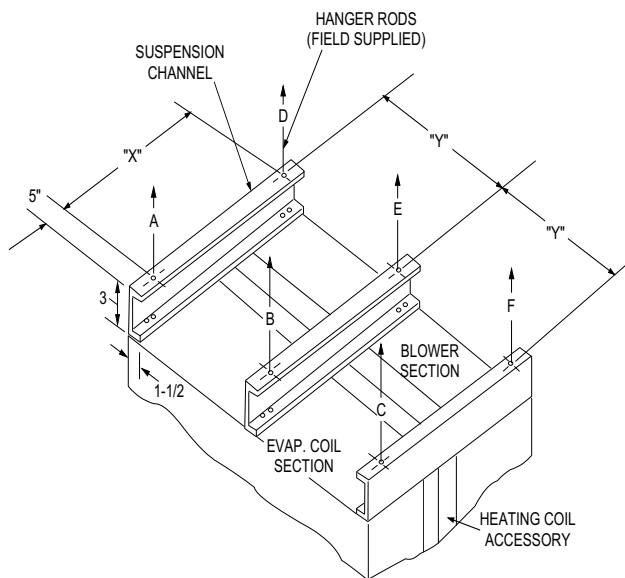


FIGURE 3: SUSPENSION ACCESSORY ARRANGEMENT

The suspension channels require no cutting or drilling. The bottom flange of each channel has enough holes to provide four bolted connections to the coil section and to the blower section at existing hole locations in the unit top panels and in the channel flange.

Each channel is provided with holes in its top flange for suspension rods or supports to suspend the unit. When vibration eliminators are required on a suspended unit, pre-engineered spring suspension rods (available locally), can be used.

NOTE: The bottom flange of the suspension channels contains double sets of holes so that a unit, with or without a heating coil accessory, may be suspended. Excess length of channel ends may be trimmed off, if desired, when units are to be suspended without a heating coil accessory.

When floor-mounting a unit for a vertical application, suspension channels may be cut in half and used under the coil section to raise unit 3 inches above the floor.

TABLE 1: SUSPENSION POINT DIMENSIONS

ACCESSORY	UNIT (Tons)	DIM. (In.)	
		X	Y
1HH0403	20, 25, 30	69-1/4	49-1/16
1HH0404	40	84	50-9/16
1HH0405	50	87	51-1/2

SUSP'N. POINT	30 TON UNIT	40 Ton	50 Ton
A	200	225	275
B	175	210	280
C	200	240	285
D	175	200	295
E	175	210	300
F	200	255	310
TOTAL Wt.	1125	1340	1745

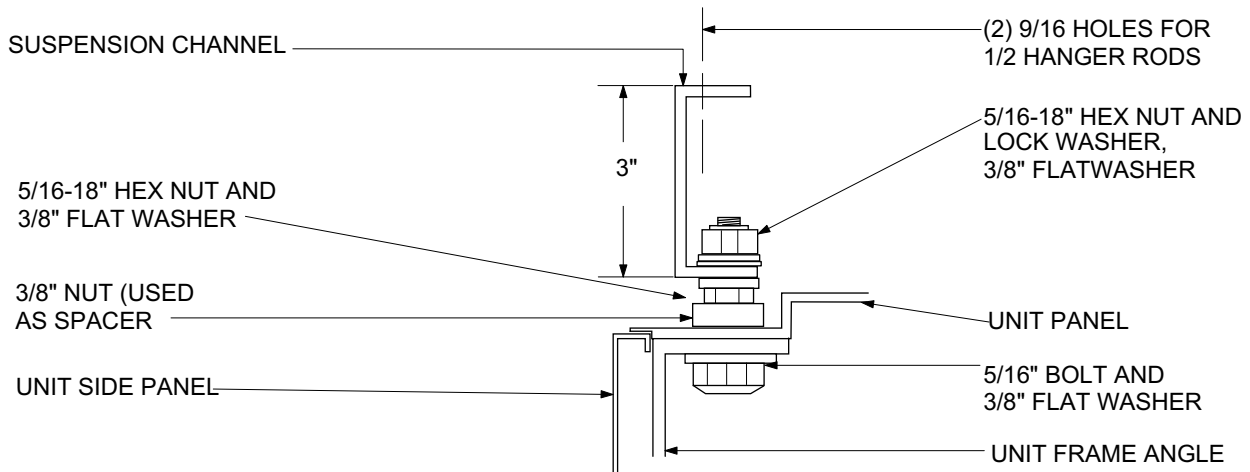


FIGURE 4: TYPICAL SUSPENSION CHANNEL MOUNTING

QUANTITY	DESCRIPTION	MODEL 1HH0403
3	CHANNEL, 1-1/2" X 3" X 79-1/4" Lg.	063-21277
3	CHANNEL, 1 - 1/2" X 3" X 94" Lg.	-
15	BOLT, HEX. 5/16" - 18 X 1 - 1/2" Lg.	021-02783
45	WASHER, FLAT 3/8	"021-09983
15	LOCK WASHER, SPRING 5/16	"021-08697
15	NUT, HEX. 3/8" - 16 UNC-2B	021-00467
30	NUT, HEX. 5/16" - 18 UNC-2B	021-02523
1	INSTRUCTION (550.13-N8.3)	035-06970

Subject to change without notice. Printed in U.S.A.

Copyright © by Unitary Products Group 2002. All rights reserved.

Supersedes: 035-18501-000-B-0102

035-18501-000-C-1102

**Unitary
Product
Group**

**5005
York
Drive**

**Norman
OK
73069**