

ACCESSORY KIT INSTALLATION INSTRUCTIONS

SUSPENSION MOUNTING ACCESSORY MODEL - 1HH0451

For 10, 15 and 20 Ton Split-System Indoor Units & 10, 15 and 20 Ton Split-System Heat Pump Indoor Units

GENERAL

The following instruction provides the necessary information to properly install the Suspension Accessory Model 1HH0451.

This accessory may be used to suspend units for horizontal applications or as a base to raise vertical units 3" off the floor for condensate drainage.

INSTALLATION

Prepare unit for horizontal suspension per the following procedure. Refer to Figures 1 and 2, and Tables 1 and 2.

1. Remove and discard the 1/4" screws that hold the unit top panels in place.
2. Remove and discard the 1/4" retainer nuts from the unit frame to permit installation of 5/16" bolts provided in the accessory.
3. Place suspension channels on the unit and secure with the bolts, spacers, nuts and washers provided. See Figure 3.

The suspension channels require no cutting or drilling. The bottom flange of each channel has enough holes to provide four bolted connections to the coil and blower sections at existing hole locations in the unit top panels.

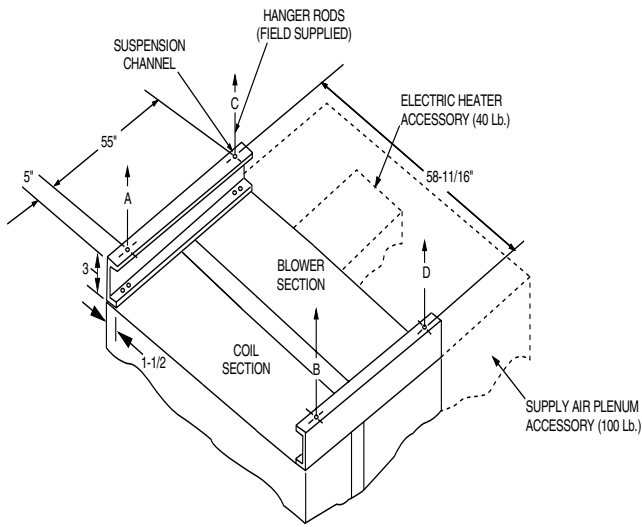
Each channel is provided with holes in its top flange for suspension rods or supports to suspend the unit. When vibration eliminators are required on a suspended unit, pre-engineered spring suspension rods (field supplied), can be used.

NOTE: The bottom flange of the suspension channels contains double sets of holes so that a unit, with or without a heating coil accessory, may be suspended. Excess length of channel ends may be trimmed off, if desired, when units are to be suspended without a desired, when units are to be suspended without a heating coil accessory.

When floor-mounting a unit for a vertical application, suspension channels may be cut in half and used under the coil section to raise unit 3 inches above the floor.

TABLE 1: SUSPENSION ACCESSORY ARRANGEMENT

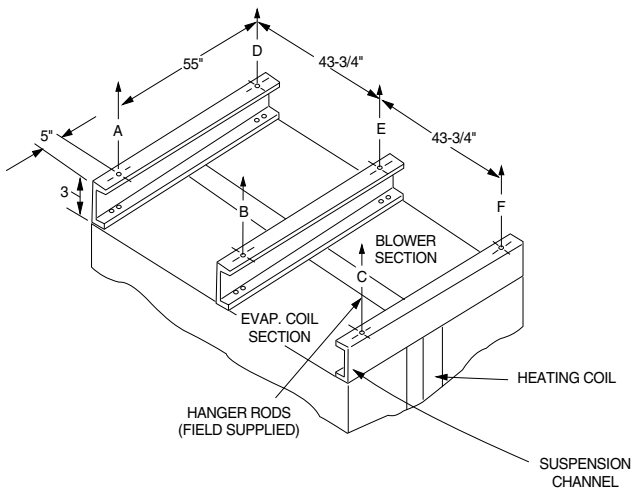
SUSPENSION ARRANGEMENT	INDOOR UNIT MODEL NUMBER			
	Figure 1	K*EU180	F*EH180	K*BU180
LA120		FA120	LF-10	FF-10
Figure 2	K*EU240	F*EH240	K*BU240	F*HP*240
	LB180		LL-15	



BASIC UNIT SUSPENSION WEIGHTS (Lbs.)

SUSP'N. POINT	W/2 HP MOTOR	W/HEATER ACCESS	W/PLENUM ACCESS	W/HEATER & PLENUM ACCESS
A	95	95	85	85
B	120	120	100	100
C	95	115	165	185
D	115	140	185	205
Total Wt.	425	470	535	575

FIGURE 1 - SUSPENSION ACCESSORY ARRANGEMENT



BASIC UNIT SUSPENSION WEIGHTS (Lbs.)

SUSPENSION POINT	W/ 3HP MOTOR*
A	142
B	132
C	152
D	162
E	132
F	127
Total Weight	847

* Motor location at suspension point "F".

FIGURE 2 - SUSPENSION ACCESSORY ARRANGEMENT

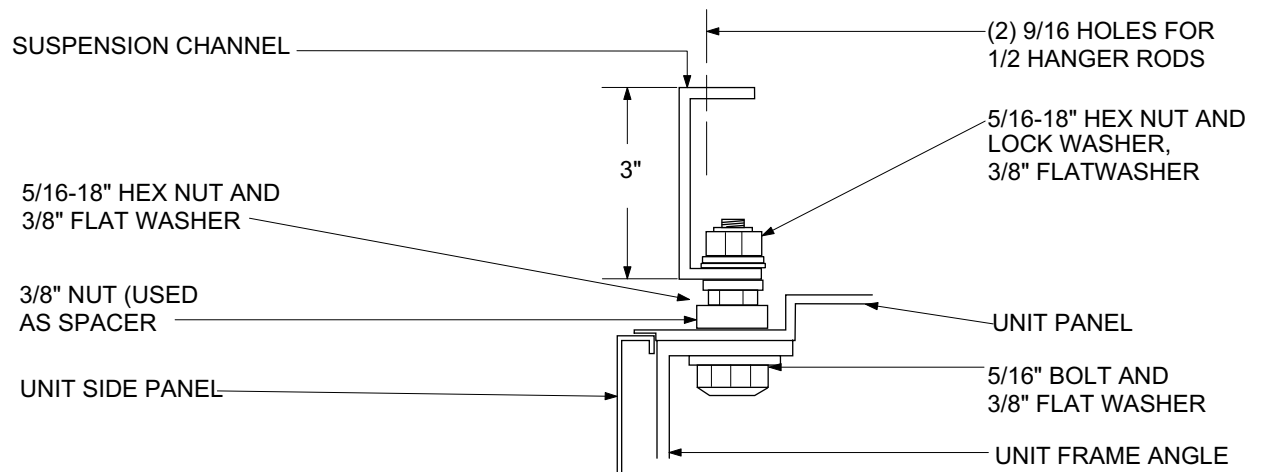


FIGURE 3 - TYPICAL SUSPENSION CHANNEL MOUNTING

TABLE 2: SUSPENSION ACCESSORY MODEL 1HH0451 PARTS LIST

QUANTITY	DESCRIPTION	PART NUMBER
6	CHANNEL, 1-1/2" X 3" X 65" Lg.	063-21276
30	BOLT, HEX. 5/16" - 18 X 1 - 1/2" Lg.	021-02783
90	WASHER, FLAT 3/8"	021-09983
30	LOCKWASHER, SPRING 5/16"	021-08697
30	NUT, HEX. 3/8" - 16 UNC-2B	021-00467
60	NUT, HEX. 5/16" - 18 UNC-2B	021-02523
1	INSTRUCTION (550.13-N7.1V)	035-16622

NOTE: Materials provided in this accessory will suspend three (3) Figure 1 units or two (2) Figure 2 units.

